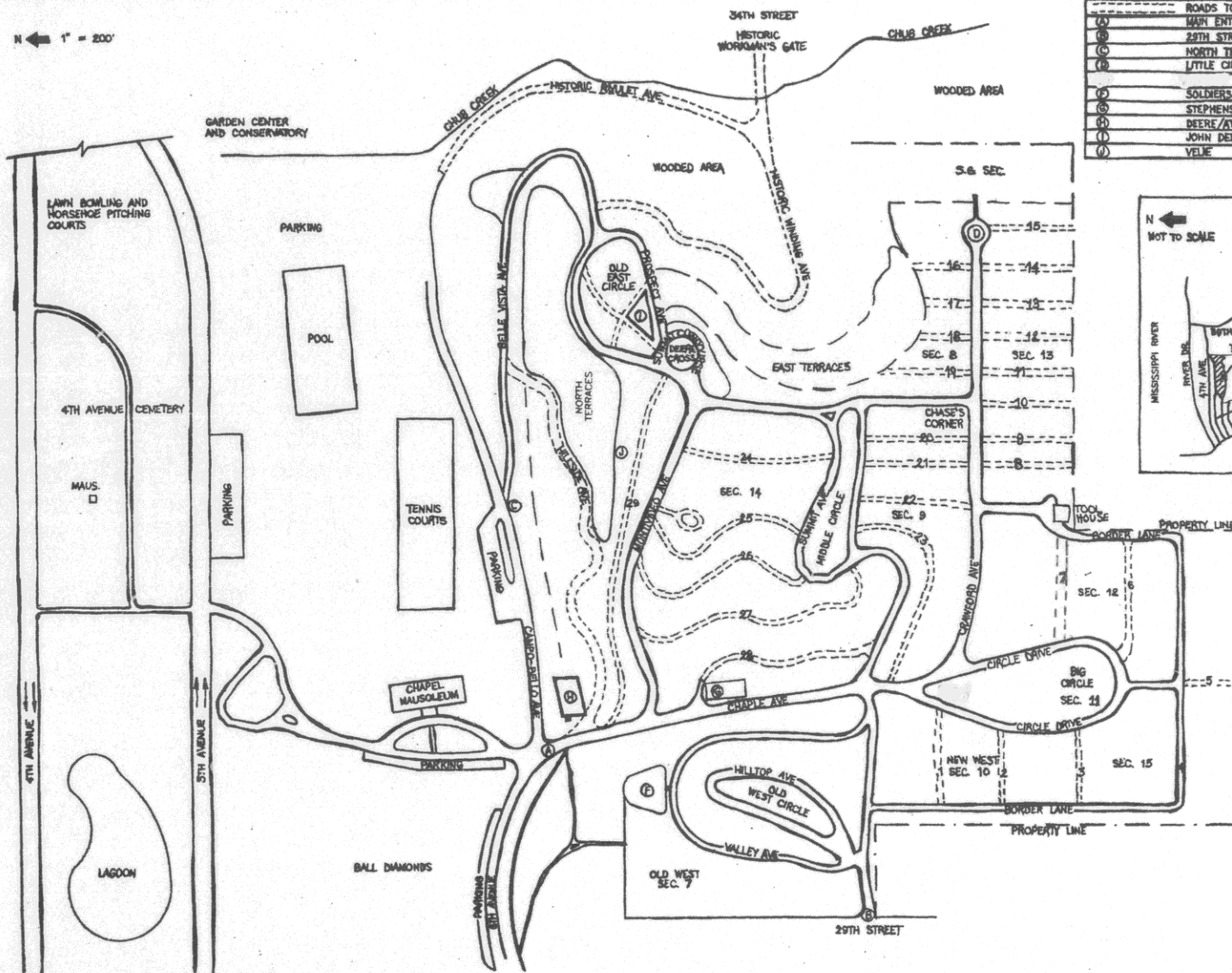
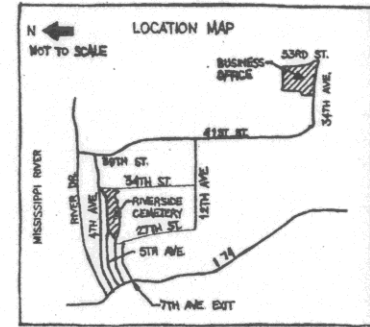


N ← 1" = 200'



ROADS TO BE DRIVEN BY CEMETERY PERSONEL ONLY	
(A)	MAIN ENTRANCE GATE
(B)	29TH STREET GATE (LOCKED)
(C)	NORTH TERRACE GATE (LOCKED)
(D)	LITTLE CIRCLE
(E)	SOLDIERS HILL
(F)	STEPHENS MAUSOLEUM
(G)	DEERE/ATKINSON/DICKINSON
(H)	JOHN DEERE
(I)	VELE



CITY OF

MOLINE
 ILLINOIS
Riverside Cemetery
 6th Avenue & 29th Street
 Business Office:
 5001 34th Avenue
 Moline, IL 61265-5600
 (309) 797-0790
 FAX (309) 797-0728

Incorporated February 17, 1824
 Administered by The Moline Park & Recreation Department since 1979.